



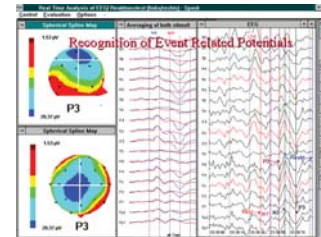
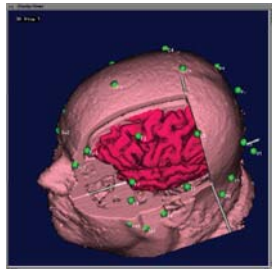
Global Care International

“We Care Because We Know You Care”



PC Based 18-Channel EEG And Mapping System

The Contec KT88-1018 Digital EEG and Mapping System represents cutting edge technology for use in everyday situations in the OR, ER, Rural Area Clinic or even in the field. Quality EEG recording is assured even in the electrically noisy OR or ICU. The KT88-1018 has high performance, high sensitivity amplifiers, high frequency and simultaneous sampling, an ECG rejection filter, shielded electrodes and a high performance electrode junction box with USB connection.



KT88 -1018 Digital EEG and Mapping System Specifications

- The system integrates acquisition, amplification, filters and A/D resolution of signal into one module with SMD technology, which improves the reliability and anti-jamming ability of the system.
- Automatically record EEG and 24 hours continuous acquisition.
- 16-lead EEG and 2-lead ECG, which provides the function of automatic measurement.
- Automatic scaling system.
- Mark event, using different color stands different event
- Digital video monitor system(option).
- The manual and automatic flashlight stimulator.
- The integrated design increases the anti-jamming ability and the sensibility of system simultaneously.
- The multifunctional digital filter system, which has the function of setting up different filters and filtering methods.
- More than 10 kinds of BEAM and EEG, such as top view, side view and monochromatic view are displayed in the same screen.
- Multiple power spectrums to include BEAM, numerical BEAM and compressed spectrum graph.
- Three-dimensional rotary BEAM.
- Perfect case management system.
- Integrated picture and character printout
- Convenient and quick USB interface

Global Care International's standard model configuration for use with the **eDoc®** Telemedicine System Model Number KT88-1018 includes a stand alone PC-Based software system and everything you need to get up and running out of the box. The system is capable of being used on any Windows XP based operating system.